



## NPD0835 8.4" IP68 & IP65 Sunlight Readable Marine Display

NAVPIXEL NPD0835, the high-performance, rugged touch monitor, is specially engineered to survive from the most demanding working environment. Housed in a milled billet aluminum case, the slim-profile NAVPIXEL NPD0835 is light weight and watertight. The front-mounted sunlight readable touch screen makes the industrial rugged monitor vividly and user-friendly. In addition, the high power efficiency and low heat design guarantee the stability and longevity required for mission critical deployment.

### Features:

- 1000 nits Sunlight Readable LCD
- Long Life, Low Power Consumption LED Backlight
- Wide Operating Temperature
- Advanced Optical Bonding (AOT)
- High Shock & Vibration Resistance
- IR Touch Support (front IP65 design)
- AR glass support (IP68 design)
- 9-36V DC Input

### Application:

- Marine



## Specifications

V1

<b>Model Number</b>	<b>NPD0835</b>
<b>Description</b>	<b>8.4" IP68 Sunlight Readable Marine Display</b>
<b>Backlight</b>	LED Backlight
<b>Active Display Area</b>	170.4 x 127.8mm
<b>Brightness</b>	1000 cd/m <sup>2</sup>
<b>Resolution</b>	800x600(SVGA)
<b>Contrast Ratio</b>	450:1
<b>Pixel Pitch (mm)</b>	0.213(H) x 0.213 (V)
<b>Viewing Angle</b>	130 (H), 115(V)
<b>Display Color</b>	16.2M
<b>Response Time</b>	35ms
<b>Inputs</b>	VGAx1
<b>PIP Support</b>	NA
<b>Mechanical</b>	
<b>IP Rating</b>	Waterproof IP68 & IP65 standards
<b>Construction</b>	Rugged Aluminum Alloy Chassis
<b>Mounting</b>	VESA mount
<b>Dimension</b>	250(W)x200(H)x64(D)
<b>Net Weight</b>	3Kg
<b>Power</b>	
<b>Voltage</b>	DC Input Voltage: DC 9~36V
<b>Power Consumption</b>	9.5W
<b>Environmental</b>	
<b>Operating Temperature</b>	-20°C~60°C
<b>Non-Operating Temperature</b>	-30°C~75°C
<b>Certification</b>	CE / FCC
<b>Marine Type Approval</b>	BV Rule IACES-E10 certification, comply with IEC 60945

*Specifications are subject to change without notice.*

*All brands or product names are trademarks or registered trademarks of their respective companies.*

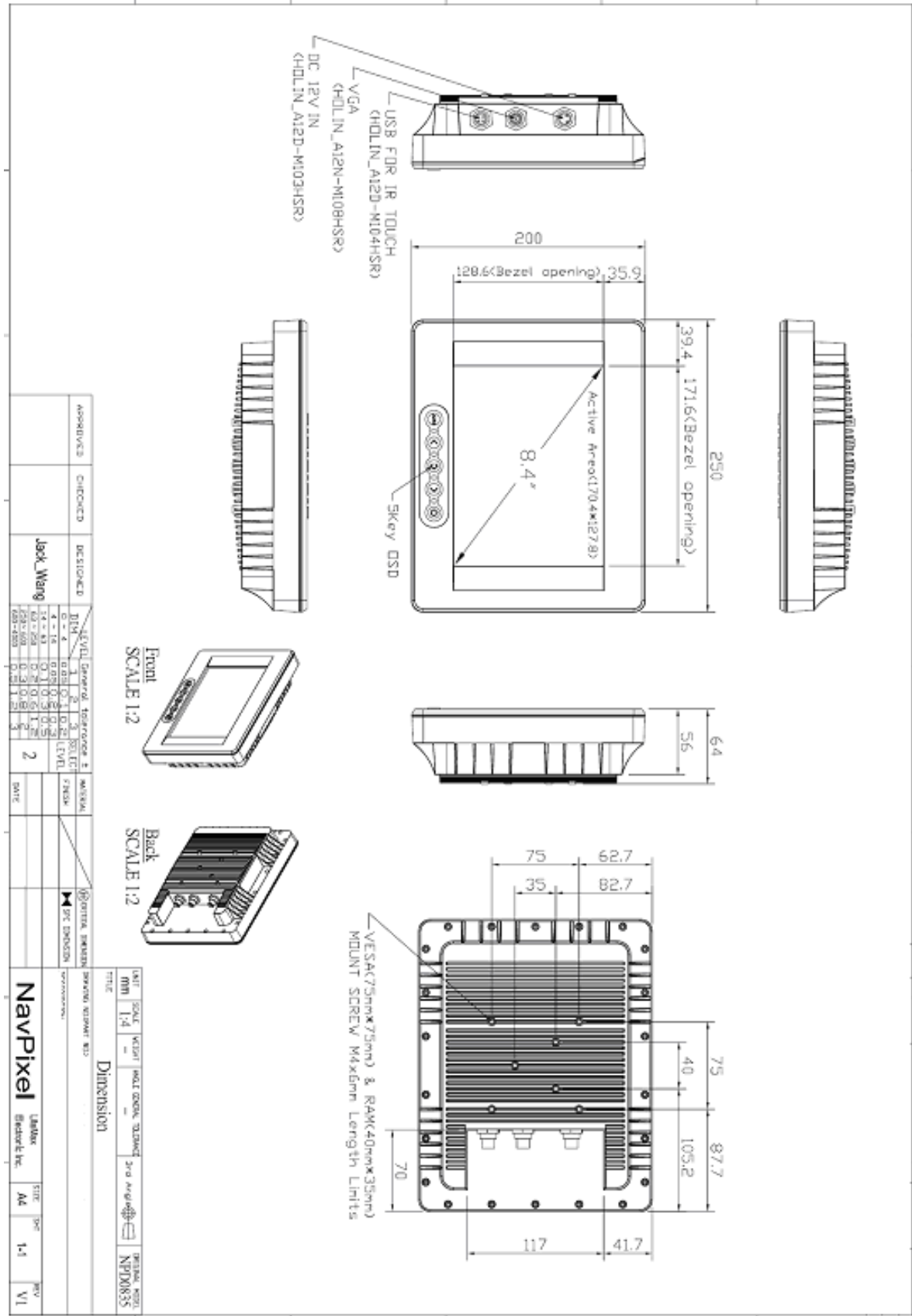




# Mechanical Drawing

## Outline Dimensions

Unit:mm





### Ordering Information

Part Number	Description
NPD0835-EGAW-A21	8.4",1000nits,SVGA,LID08A05.O/F,AR Glass,AD5621G,WP,AOT,P,V02
NPD0835-ETAW-A21	8.4",1000nits,SVGA,T/IR-USB.LID08A05,O/F,AD5621G,WP,AOT,V02
NPD0835-ETAW-A23	8.4",1000nits,SVGA,Touch-usb.LID08A05,AD5621G,O/F,WP,AOT,Carton w/o logo,V02

### Optional Accessories

Part Number	Description
840612051103	ADAPTER,12V,5A,60W.KPA-060F,DC Plug,2.1*5.5mm.P
810118301000	CABLE,VGA,1830mm.D-SUB15P MALE TO HOLIN FEMALE.8P,WATERPROOF,P
810518301000	CABLE,OTHER,USB.USB A TYPE MALE TO HOLIN.FEMALE 4P,WATERPROOF,P
810618301000	CABLE,POWER,DC,1830mm.DC JACK TO HOLIN FEMAL 3P:WATERPROOF,P
810618301010	CABLE.POWER.AC.1830mm USA type
810618301090	CABLE,POWER,AC,1830mm Europe type
810618301050	CABLE.POWER.AC.1830mm UK type
810618301170	CABLE.POWER,AC,1830mm Australia type
810618301030	CABLE.POWER.AC.1830mm Japan type

